

Bring the following to class for pin-up.

**First perspective sheet:**

In Sketchup, create one compelling eye-level exterior perspective of your house. Save this view as a 2D image. Revise your view in Photoshop and then print the result. Print at 150 dpi or higher. Your sheet should measure about 24"x24." Trim your sheet to fit your perspective. Print in color or black and white.

Cut and paste your .skp house model into one of the three site models downloadable from [http://www.thisclass.com/arch\\_580/sketchup\\_models.htm](http://www.thisclass.com/arch_580/sketchup_models.htm) You can mix and match the trees from any of the site models, but don't change the ground plane which is the same for all three site models.

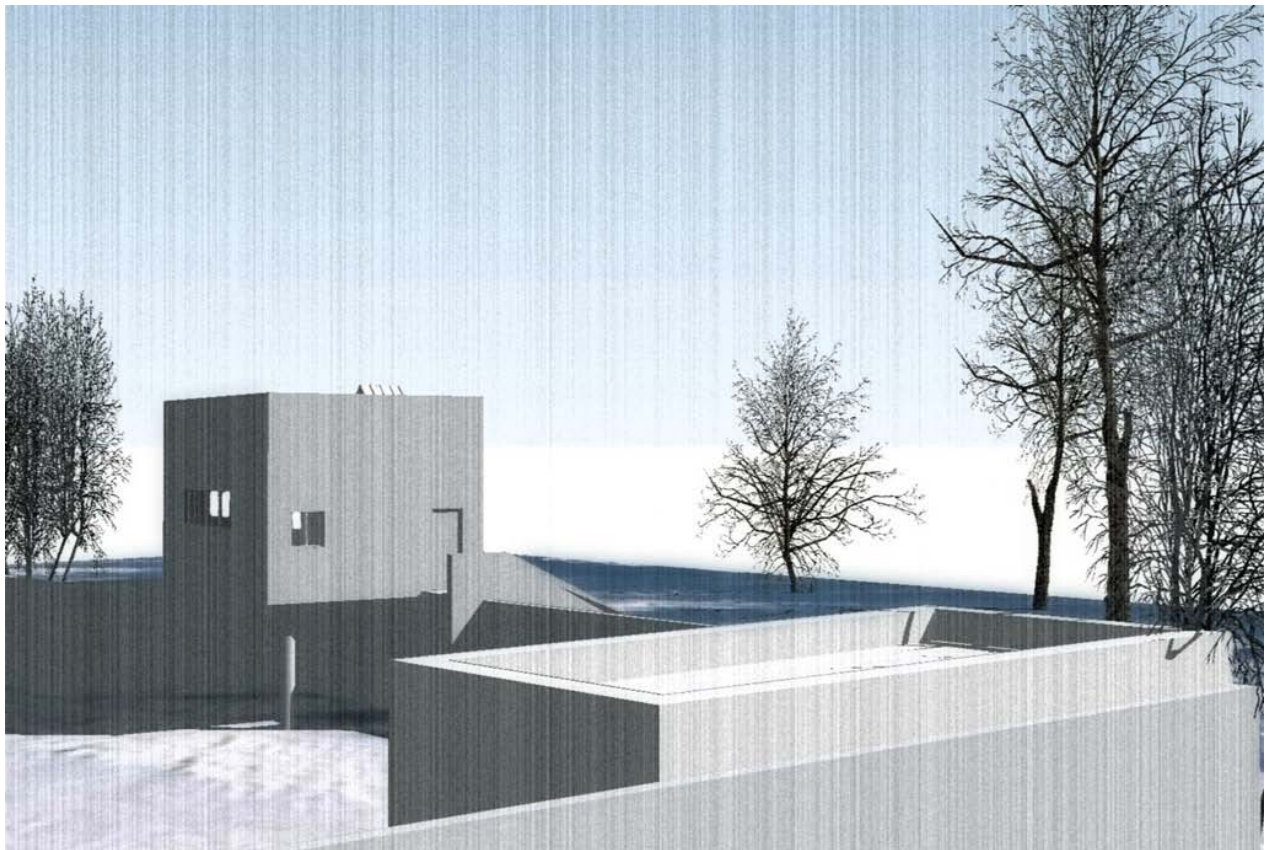
Create an eye-level perspective of your house looking out over a frozen lake in January. The arrangement of the house and trees on the site and the orientation of the sun can and should be manipulated in order to create an effective perspective composition.

Your perspective should subtly and abstractly capture a strong sense of place. Consider the perspective's balance, contrasts of tone, shape and detail; its focus, and its flat pictorial and spatial qualities.

**Second perspective sheet:**

In Sketchup, generate two or more perspective views of your house. You are free to decide what you want to depict in these views. Keep in mind, though, that your choice of perspective views should say something about your house or the presentation process itself. Save your perspectives as 2D images. In Photoshop, combine the perspectives in a single sheet layout and then print this image out on one sheet of paper. Print at 150 dpi or higher. Your sheet should measure about 24"x24." Trim your sheet to fit your perspectives. Print in color or black and white.

For the perspectives on the second sheet, you are not bound by compositional rules. Choice of vantage point, color, texture, shade and shadow, focus, entourage, sequence, and the level of realism of perspectives is yours to decide.



Above: perspective view generated from Zywicki's Sketchup model with the site\_alter base. The image was revised in Photoshop using grain and blur filters.