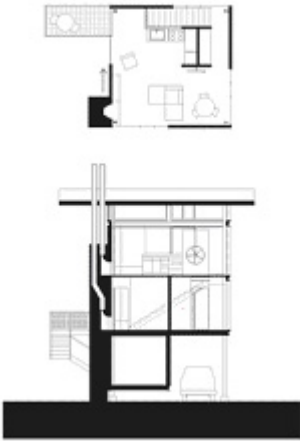
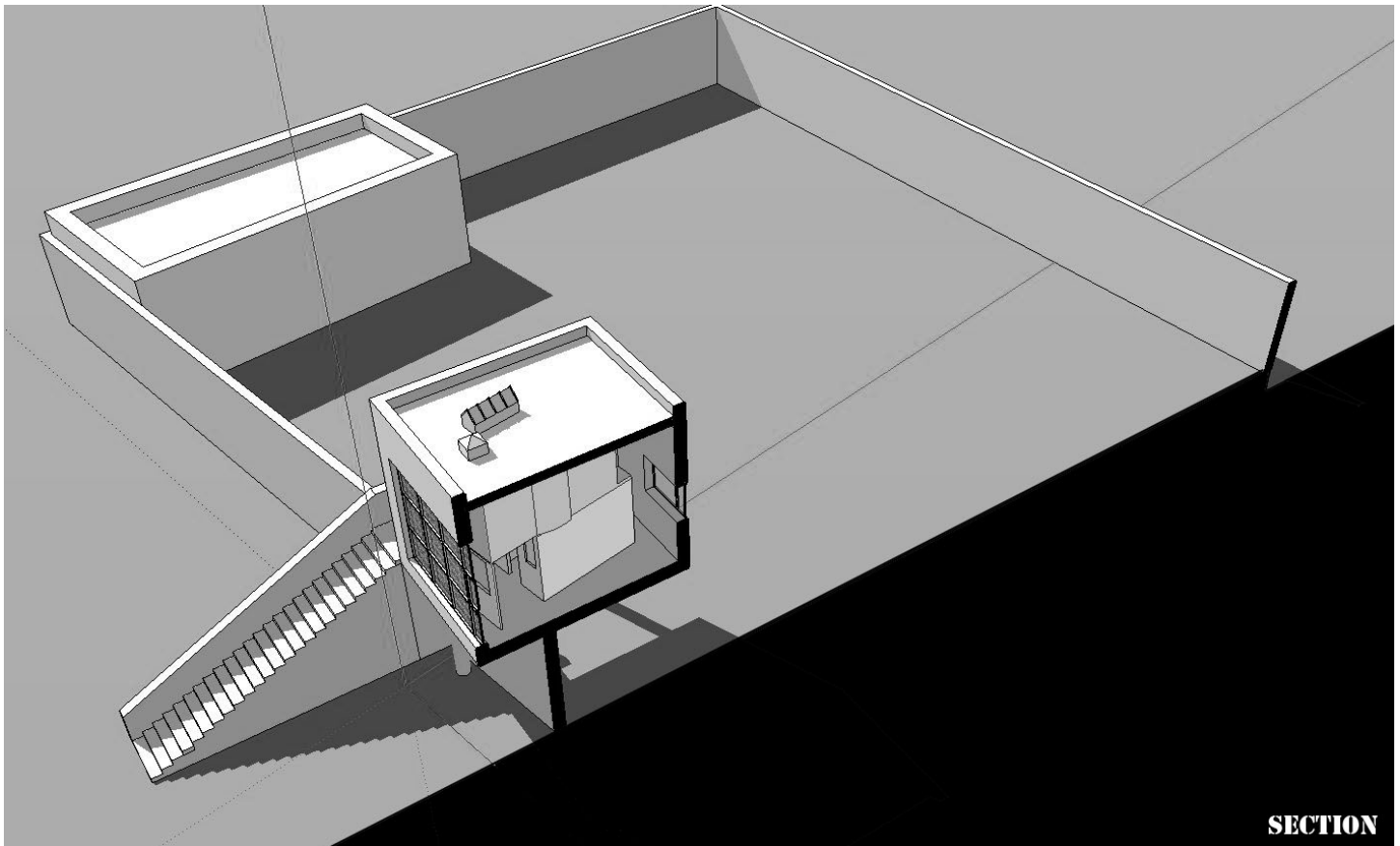


**Sketchup House Model** Assignment 8: HOUSE plan, sections in Sketchup  
due: November 12

Use Sketchup to construct plan and section views of your precedent house. If necessary, touch up these views in Photoshop, then print the results on two sheets of vellum. (As an alternative to refining your work in Photoshop, you may finish your drawings in a program such as Revit, AutoCad, formZ, Microstation, or Illustrator.) Print at 150 dpi or higher. Each presentation sheet should measure about 24"x24." Trim sheet to fit your plan and section. Label your drawings. Print in black and white.



Sheet one: plan and section views aligned, as illustrated above



Sheet two: section perspective view The sketchup model of the house shown above is downloadable from:  
[http://www.thisclass.com/arch\\_580/sketchup\\_models.htm](http://www.thisclass.com/arch_580/sketchup_models.htm)