

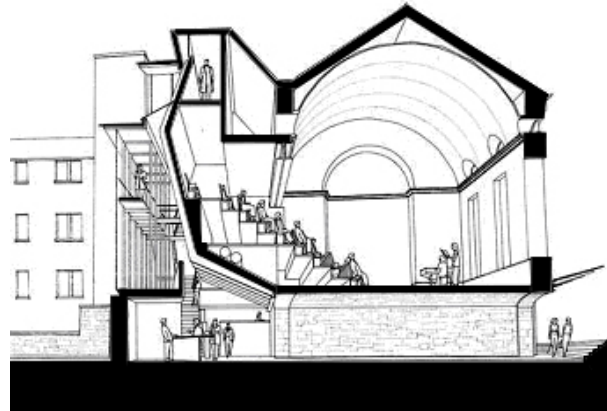
## House Project Assignment 4

Perspective Drawing due October 8th

For this assignment, hand-construct a perspective view of your precedent building. Before you begin, first decide on what type of perspective view you want to construct: Either a one-point section perspective or a two-point exterior perspective with the building oriented at no less than 30 degrees from the picture plane. Make the perspective view communicate something about your precedent house. Include set-up and construction lines in your finished drawing.



Two-point eye-level perspective



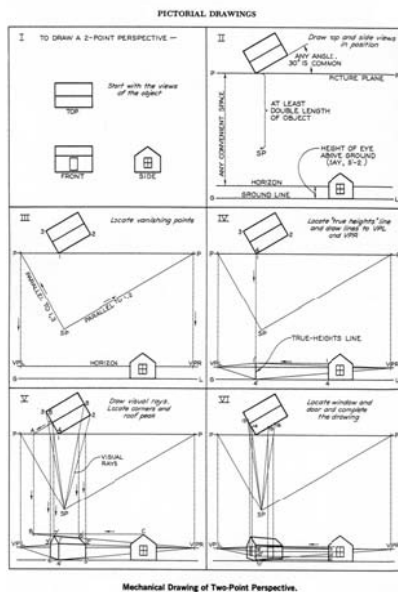
One-point section perspective

Format:

Do all construction on a sheet size of 20"x30" or thereabouts; paper type: vellum is preferred; medium: pencil

Grading Criteria:

Construction accuracy, pictorial composition



download a larger version of the above image [here](#).