

## House Project Assignment 1

For this project, you are to research and build a scaled physical model of one of the houses shown below. Over the span of the semester, you will sketch and draft plan, section, axonometric and perspective views of the house you choose today. Each of you should get together with a few classmates- in groups of no more than four- and choose a house from the list below to research and model:



Delta Shelter (stilt cabin) - Kundig



4x4 House- Tadao Ando

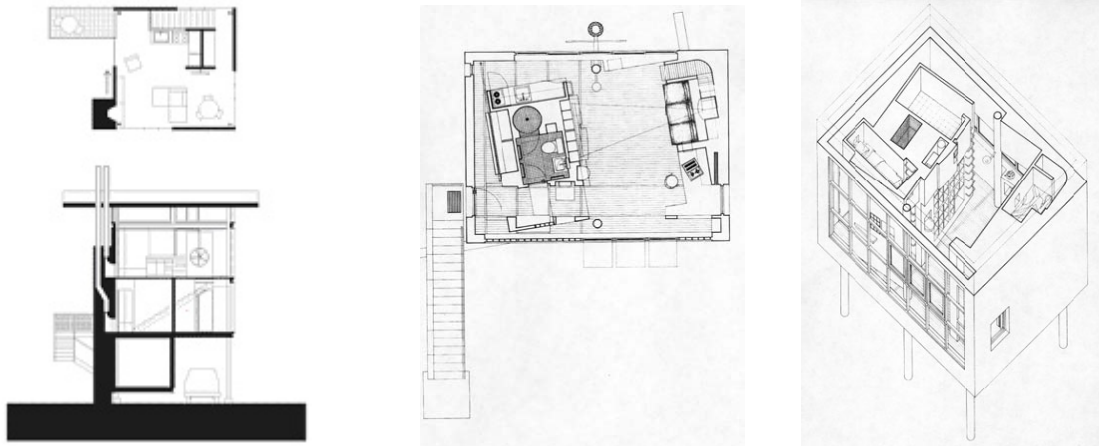


Outpost House- Kundig



Garden Pavilion- Anthony Ames

Next Friday, your team should bring to class photocopies of the images and drawings that you found during your research of the house you signed up to model. You do not have to track down construction documents of your house in order to make a scaled physical model of it. The Delta shelter drawings below are from Arch Record. The Ames Garden Pavilion drawings were found on the internet.



Each team should also bring a study model of their precedent house to class next Friday. That's one model per team. Choose a scale for the physical model- I'd recommend  $1/8"=1'-0"$  or  $1/4"=1'-0"$ - so that the house, when constructed, is about the size of a loaf of bread. Provide a base for the model. Include major interior partitions and walls. If structural elements are an important part of your precedent's expressed form, these should also be expressed in the model. The model may pull apart. The model should not be clean and refined. It should feel like a sort of nicely done study model and can be made out of mostly chipboard or cardboard. I've included a few examples of models that satisfy that criteria.

