

# 4m×4mの家

安藤忠雄

4×4 HOUSE

Tadao Ando

2003

Tarumi-ku, Kobe-shi, Hyogo

RC

4 stories, 1 basement

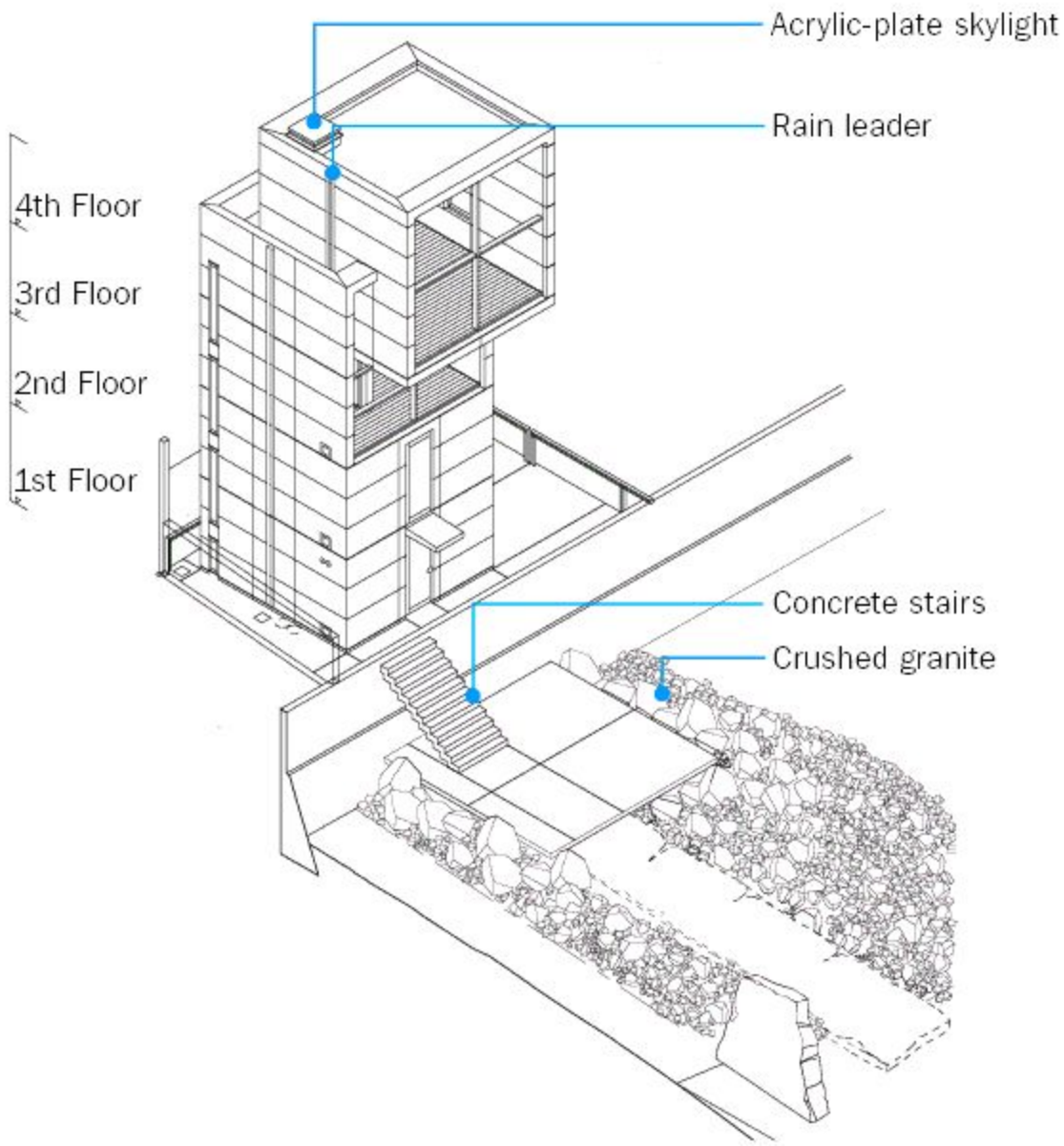
66.42㎡

22.56㎡

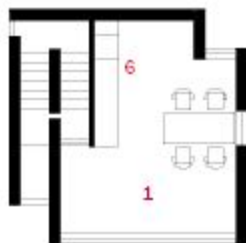
117.78㎡

2 persons





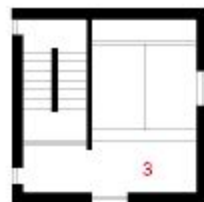
# Tadao Ando : 4x4 House Plans & Sections



FOURTH FLOOR



THIRD FLOOR



SECOND FLOOR



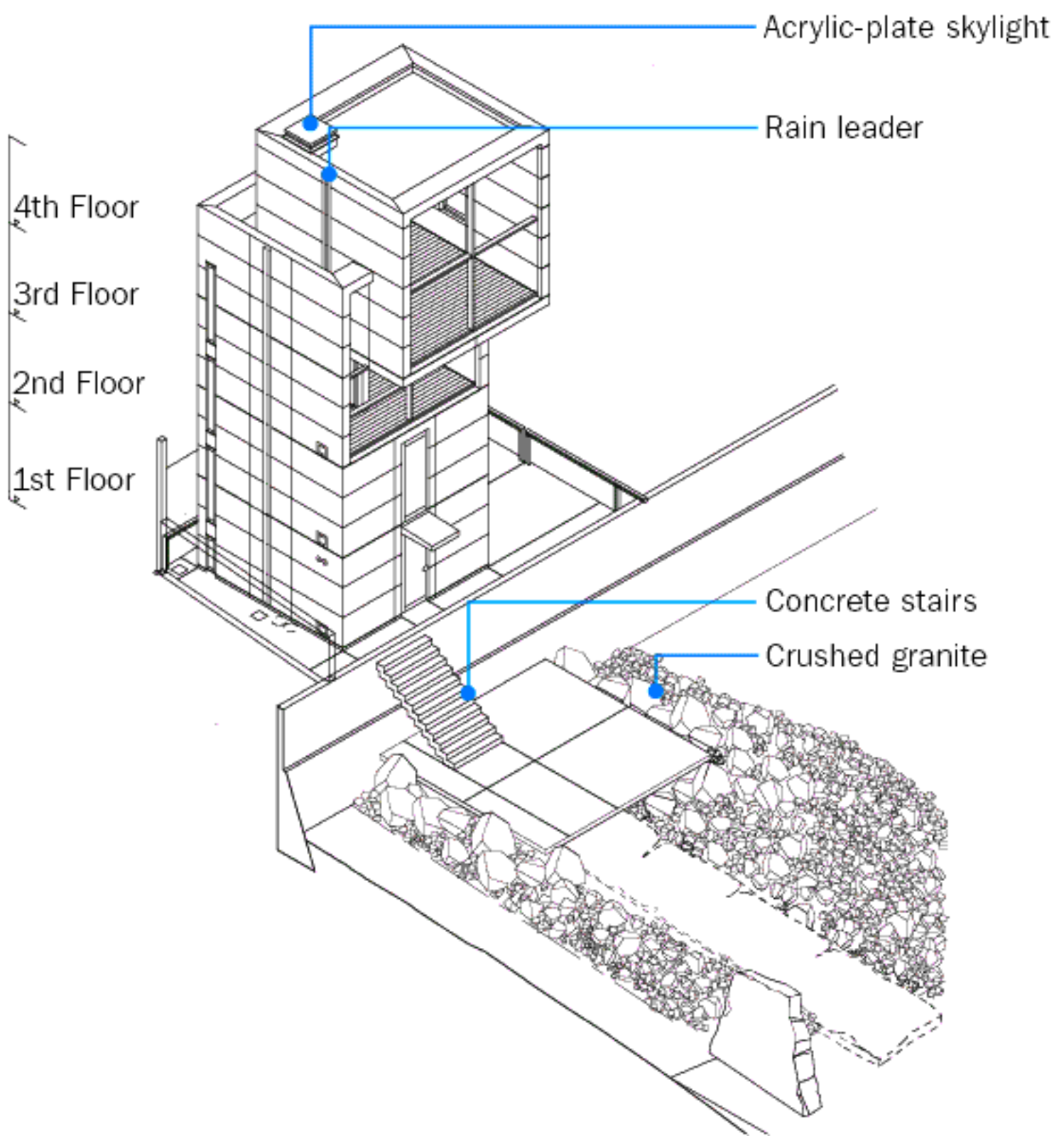
FIRST FLOOR



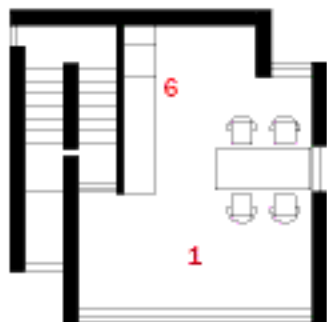
SECTION A-A

- 1. Living/ Dining
- 2. Study
- 3. Bedroom
- 4. Entrance
- 5. Storage
- 6. Kitchen
- 7. Bath

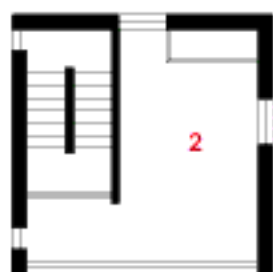




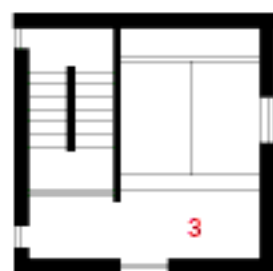
# Tadao Ando : 4x4 House Plans & Sections



FOURTH FLOOR



THIRD FLOOR

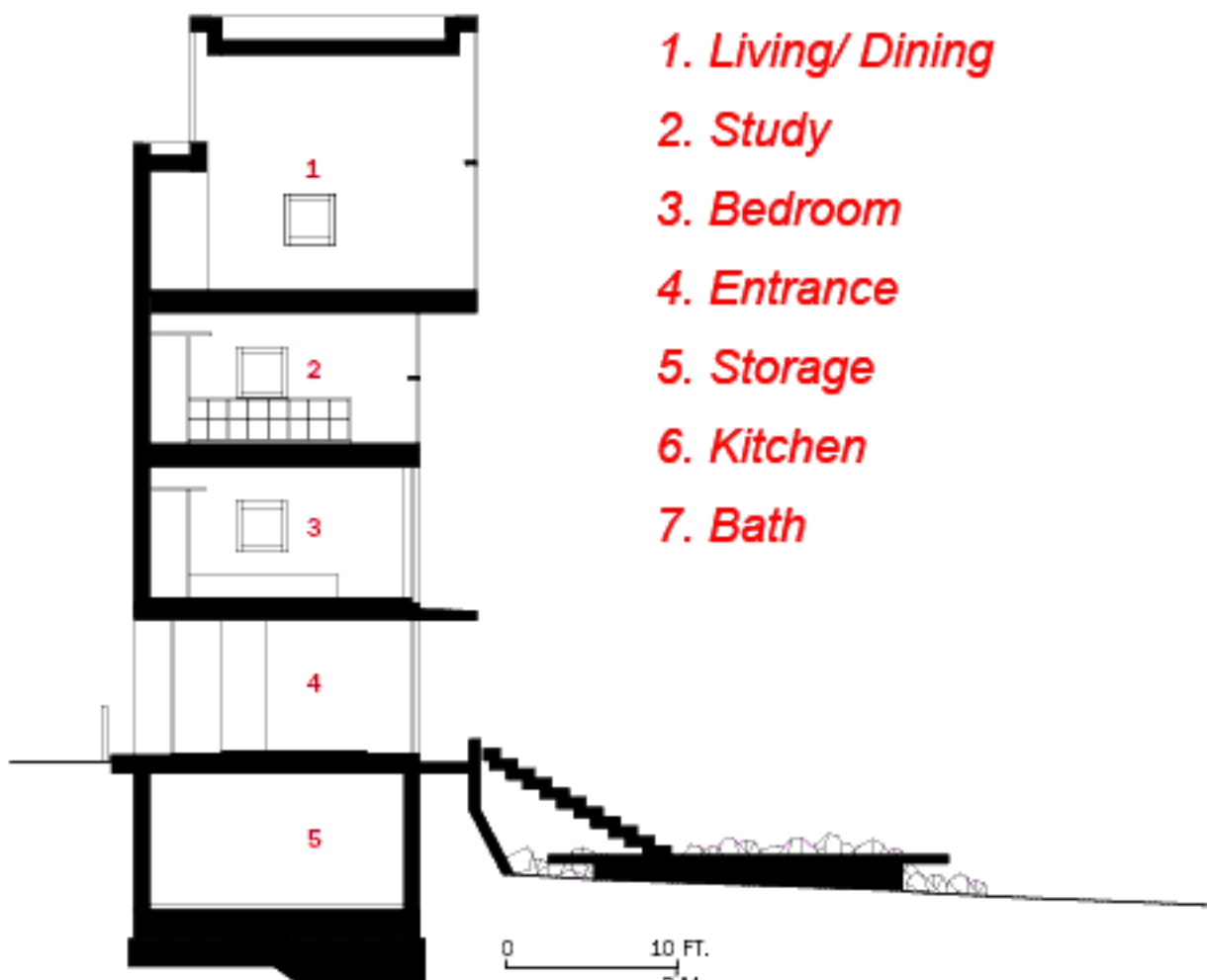


SECOND FLOOR



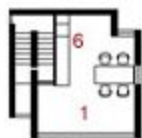
FIRST FLOOR

0 3 FT.  
1 M



SECTION A-A

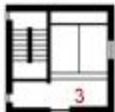
- 1. *Living/ Dining*
- 2. *Study*
- 3. *Bedroom*
- 4. *Entrance*
- 5. *Storage*
- 6. *Kitchen*
- 7. *Bath*



FOURTH FLOOR



THIRD FLOOR



SECOND FLOOR



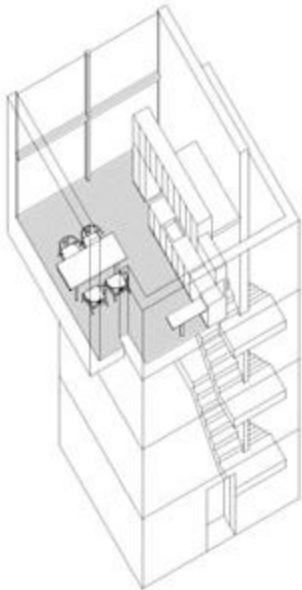
FIRST FLOOR

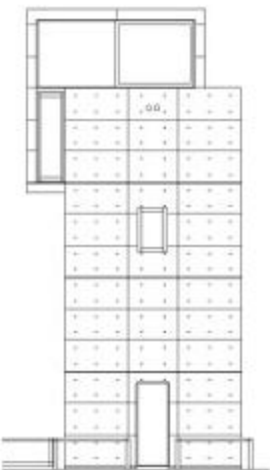


SECTION A-A

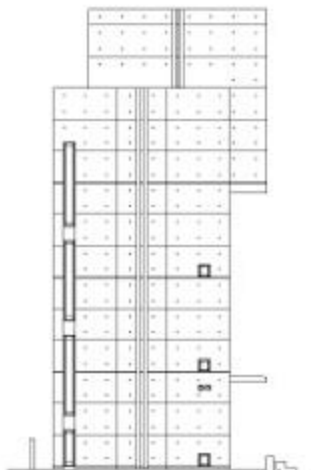
1. Living room
2. Study
3. Bedroom
4. Entrance
5. Storage
6. Kitchen
7. Bath



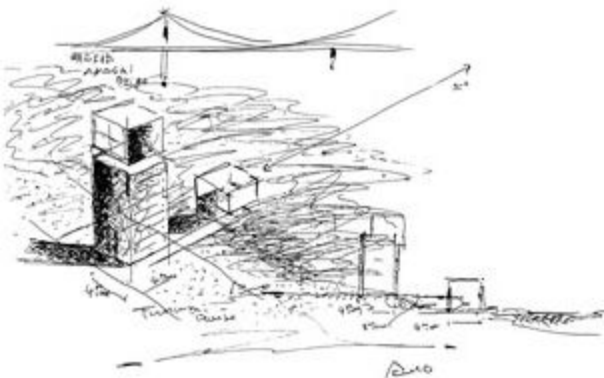




North Elevation



West Elevation









*Tadao Ando's 4x4 house (Akashi - 30 minutes from Kobe)*